

Features

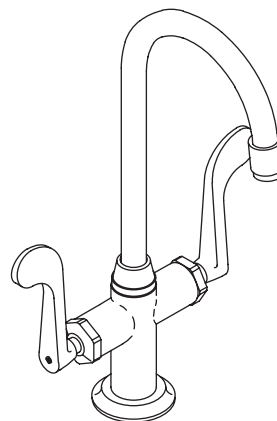
- Brass construction
- Brass valve bodies
- Quarter-turn washerless ceramic disc valves
- 2.5 gallons (9 L) per minute flow rate
- Lower flow aerator options are available (refer to the Kohler Price Book)
- Single-hole mounting
- Wristblade handles
- Optional escutcheon plate is available for three-hole installations
- 5-1/2" (14 cm) gooseneck swing spout

Codes/Standards Applicable

Specified model meets or exceeds the following:

- ASME A112.18.1/CSA B125.1
- NSF 61
- Energy Policy Act of 1992 (EPACT)
- ADA

ENTERTAINMENT SINK FAUCET K-8761

ADA


Colors/Finishes

- CP: Polished Chrome
- PB: Polished Brass

Specified Model

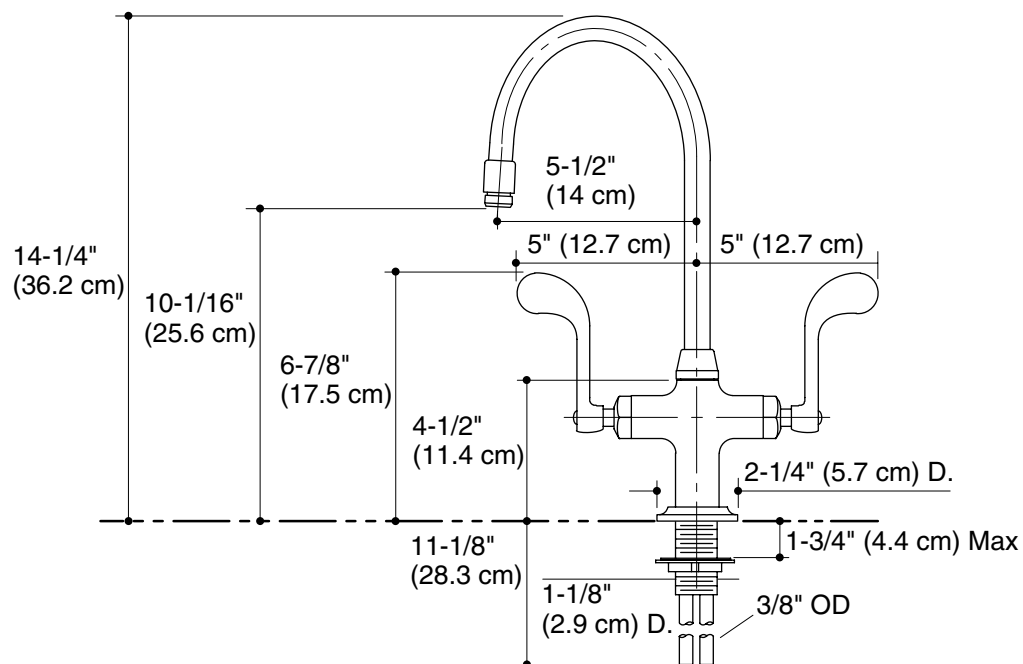
Model	Description	Colors/Finishes	
K-8761	Entertainment sink faucet	<input type="checkbox"/> CP	<input type="checkbox"/> PB
Optional Accessories			
K-14511	10-1/2" (26.7 cm) escutcheon plate for three-hole installations	<input type="checkbox"/> CP	<input type="checkbox"/> PB
K-14531	6" (15.2 cm) escutcheon plate for three-hole installations	<input type="checkbox"/> CP	<input type="checkbox"/> PB

Product Specification

Two-handle entertainment sink faucet shall be of brass construction. Faucet shall feature brass valve bodies. Faucet shall feature quarter-turn washerless ceramic disc valves, assuring positive handle stop positioning. Faucet shall be rated at 2.5 gallons (9 L) per minute. Faucet shall have lower flow aerator options. Faucet shall include single-hole mounting, 5-1/2" (14 cm) gooseneck swing spout and wristblade handles. Optional escutcheon plate is available for three-hole installations. Faucet shall be Kohler Model K-8761-_____.

Installation Notes

Install this product according to the installation guide.



Product Diagram