



ACCURATE  
LOCK & HARDWARE  
AMERICAN CRAFTED SINCE 1972

---

SL9100PDL SELF-LATCHING POCKET DOOR LOCK

# SL9100PDL SELF-LATCHING POCKET DOOR LOCK

## DETAILS + OPTIONS

Latch bolt held back and released by pressing of a button or by sliding door closed against jamb: *Door self latches whether latch is projected or retracted. When door hits the frame, latch projects and latches.*

Latch bolt functions like an edge pull when projected.

Deadbolt available for locking/extra security (see function list).

Single action egress allowing unlocking and sliding the door open in one operation.

Supplied with Accurate's SLFT flush pulls.

2 ½" or 2 ¾" backset standard, other backsets available as a special order.



SLFT-T



# SL9100PDL SELF-LATCHING FUNCTIONS

**SL9122PDL  
STORE DOOR LOCK**

Latch bolt by lever either side.

Deadbolt by key either side.

No emergency egress.

**SL9124PDL  
DORMITORY**

Latch bolt by lever either side.

Deadbolt by key outside, thumb turn inside.

Turn of inside handle retracts latch and deadbolt simultaneously, automatically unlocking outside handle.

**SL9125PDL  
PASSAGE**

Latch bolt by handle either side.

**SL9134PDL  
HOTEL/MOTEL**

Latch bolt by handle inside and Guest/Master key outside.

Outside handle always RIGID.

Deadbolt by turn piece inside.

Turn of inside handle retracts latch and deadbolt simultaneously.

**SL9139PDL  
PRIVACY**

Latch bolt by handle either side.

Deadbolt by thumb turn and optional emergency coin turn outside.

Turn of inside handle retracts latch and deadbolt simultaneously automatically unlocking outside handle.

**SL9139ADA-i  
PRIVACY x INDICATOR**

Latch bolt by lever either side.

Deadbolt by thumb turn and emergency coin turn with indicator outside.

Turn of inside lever retracts latch and deadbolt simultaneously, automatically unlocking outside lever.

# SL9100PDL SELF-LATCHING FUNCTIONS

## **SL9145PDL CLASSROOM**

Latch bolt by key outside and handle either side unless outside handle is locked by key.

## **SL9153PDL OFFICE**

Latch bolt by key outside and handle either side unless outside lever is locked by thumb turn or key.

Key or thumb turn locks or unlocks outside handle.

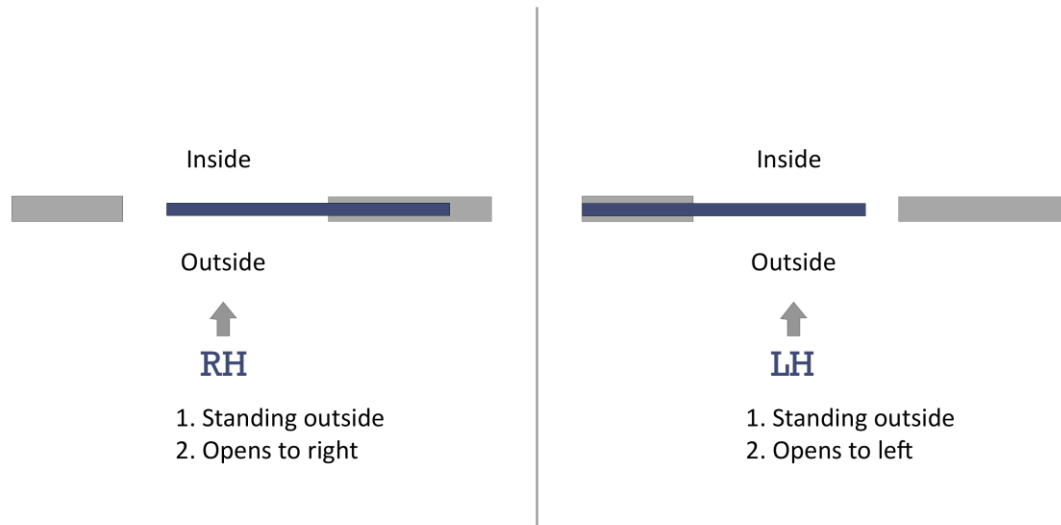
## **SL9159PDL STOREROOM**

Latch by handle inside and key outside.

Outside handle always rigid.

# HOW TO SPECIFY

## HANDING



## FINISHES

**GROUP 1:** US4, US4NL, US32D\*, US26D

**GROUP 2:** US3, US3NL, US26, US32\*, US9\*, US10\*, US10B, US14, US15, US19

**GROUP 3:** BN, BB, TN, TB, DURO, ESN, US15A, US5

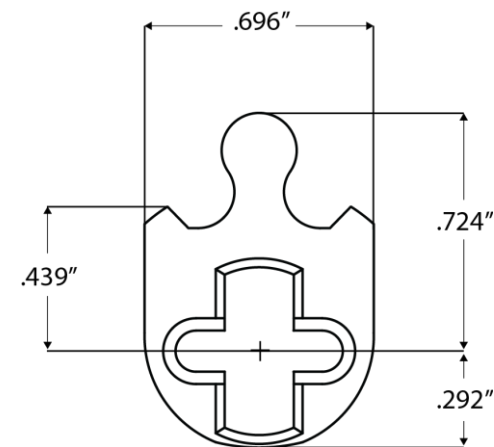
\*Trim options (including Accurate levers may not be available in US32D, US32, US9, or US10 finish. Please call for assistance.

To view examples of finishes visit: [Accurate finishes](#).

## CYLINDERS & KEYING

SL9100 Locks accept any standard American mortise cylinder. For details on required cams and compatibility with other manufacturers' cylinders, please visit:

[Accurate Support](#)



# HOW TO SPECIFY

FUNCTION.**BACKSET**.**FINISH**.HAND.DOORTHICKNESS

## Functions

See available functions (pg. 3-4)

### Backset

2 1/2" or  
2 3/4"  
Backset  
typical

### Finishes

See available  
finishes pg.5

### Door Thickness

1 3/4" thick door typical

## EXAMPLES

### Passage

E.g. SL9125PDL.**212**.**US26D**.RH.134DT

### Privacy

E.g. SL9139PDL.**234**.**US10B**.LH.214DT