

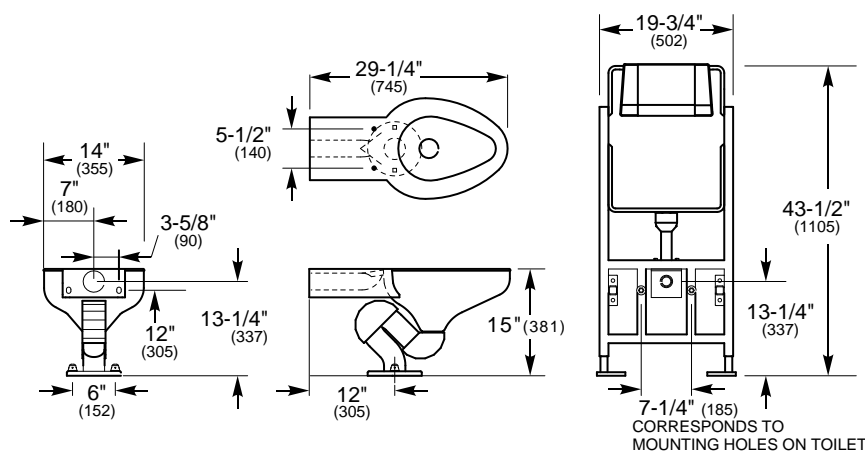


Residential METAAL Toilet

FEATURES


- **TOILET WITH DESIGNED TO WORK WITH GEBERIT® CONCEALED TANK AND CARRIER SYSTEM**
Tank & Carrier Sold Separately from Fixture. Geberit System is Installed into Wall Utilizing Standard Residential Water Lines; Waste Outlet on the Floor.
- **Exposed Decorative P-Trap**
Satin Finish with Mira Finish Accents
- **Stainless Steel Construction: 16-Gage**
- **Stainless Steel is a Recyclable Metal.** 
- **Elongated Toilet Bowl; Punched & Threaded for Top Mounted Toilet Seat**
1/4"-20 x 1" Screws Provided (Seat Sold Separately)
-  **ADA Compliant Configuration Available**

Model 8957 with CTC
Metal Toilet
with Geberit Flushing
System/Carrier
(Satin Finish Push Panel)



INSTALLATION INSTRUCTIONS ARE AVAILABLE.

ORDERING OPTIONS

- ☐ 8957 ON-FLOOR Mounting (Floor Waste),
Stainless Steel Toilet
Satin Finish with Mira High Polish
Finish Accents on P-Trap
- ☐ - ADA  ADA Compliance -
Taller bowl to meet ADA requirements
(See attached specification sheet)
Other ADA considerations may be required.
Please check your local ADA regulations

See the following information sheet for
**Geberit® Concealed Tank and
Carrier System with Accessories**

PRODUCT Specification . . . This cistern flush style toilet is designed to work with a Geberit® concealed tank and carrier system (tank and carrier sold separately). The toilet features an patented* exposed decorative, geometric P-trap with a floor waste rough-in 12" (305 mm) from wall. Toilet is fabricated from 16-gage, Type 304 stainless steel. Bowl is elongated and shall be punched for a toilet seat. Seat is sold separately.



A 17" (430mm) height toilet is available to comply with ADA regulations (see attached sheet). Geberit® carrier is adjustable to accommodate ADA toilet height requirements. Other ADA considerations may be required. Please check your local ADA regulations.

PLUMBING Specification . . . The toilet must use a Geberit® concealed tank and carrier system. Geberit® carrier requires 19-3/4" (502 mm) clearance between 2" x 6" (51 mm x 152 mm) wall studs. Tank releases an average 1.6 gallons (6 liters) per flush. Waste is through the floor 12" (305 mm) from the wall.

* U.S. Design Patent 470578

Approved for Manufacturing

Company	Project Name	Authorized Signature	Name Written Clearly	Date
---------	--------------	----------------------	----------------------	------

Neo-Metro assumes no responsibility for use of void or suspended data. All dimensions are nominal and subject to manufacturer change without notice.
© 2005 NEO-METRO®, A Division of Acorn Engineering Company. Please visit www.neo-metro.com for most current specifications.

TOLL FREE 800-591-9050 • WEB SITE www.neo-metro.com

NEO-METRO® • P.O. Box 3527 • City of Industry, CA 91744 U.S.A. • Local Phone 626-855-4854 • Fax 626-937-4725

TS 8957
PAGE 1 OF 3

L1000759 (11/15/04)

Geberit® Concealed Tank and Carrier System with Accessories



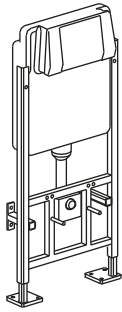
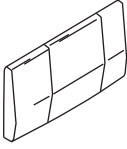
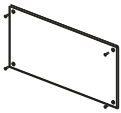

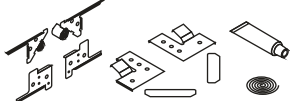
Euro-Urban Contour Toilet



Metāāl Toilet

***Geberit®* CONCEALED TANK AND CARRIER SYSTEM WITH ACCESSORIES FOR USE WITH EURO-URBAN CONTOUR TOILET OR METĀĀL TOILET**

Elimination of the visible tank creates attractive decorator options for today's efficient bathroom designs. Geberit® tank releases 1.6 gallons (6 liters) per flush. Carrier requires 19-3/4" (502 mm) clearance between 2" x 6" (51 mm x 152 mm) wall studs. Includes elbow waste connector (used only for the Euro-Urban Contour Toilet.) Choice of Large Satin Finish Panel, Large Mira Finish Panel, or Small Mira Finish Pneumatic Push Button. (Access door or panel solution recommended for Small Push Button option.)

PRODUCT DESCRIPTION		MODEL NUMBER
 	Geberit® Concealed Tank and Carrier System with Geberit® Large Satin Finish Push Panel 13-3/8" (300 mm) x 7-5/16" (185 mm)	-CTC
	Geberit® Concealed Tank and Carrier System with Geberit® Large Mira Finish Chrome Plated Brass Push Panel 13-3/8" (300 mm) x 7-5/16" (185 mm)	-CTCHP
	Geberit® Concealed Tank and Carrier System with Small Mira Finish Pneumatic Push Button 4-1/4" (108 mm) x 4-1/4" (108 mm)	-CTCB
	Access Panel for CTCB Option 7-1/2" (191 mm) x 13-1/2" (343 mm)	4080-020-001 Satin/Stainless Steel 4080-022-001 Mira/Stainless Steel 4080-024-001 Finished Copper
	Access Door for CTCB Option with Screwdriver Latch 7-1/2" (191 mm) x 13-1/2" (343 mm)	0530-150-001 Satin/Stainless Steel 0530-155-001 Mira/Stainless Steel 0530-160-001 Finished Copper
	Geberit® Access Door Assembly Kit for CTCB Option Make an Access Door with materials to match your decor (eg. tile, wall paper)	2954-715-000

Neo-Metro assumes no responsibility for use of void or suspended data. All dimensions are nominal and subject to manufacturer change without notice. © 2005 NEO-METRO®, A Division of Acorn Engineering Company. Please visit www.neo-metro.com for most current specifications.

TOLL FREE 800-591-9050 • WEB SITE www.neo-metro.com

NEO-METRO® • P.O. Box 3527 • City of Industry, CA 91744 U.S.A. • Local Phone 626-855-4854 • Fax 626-937-4725

TS 8957
PAGE 2 OF 3